



# DRILLING LOG



FROM :(mt) 1700

TO :(mt) 2300

SCALE : 1/ 1000

Well Name : BMA A9B

Company : ESSO AUSTRALIA

Country : AUSTRALIA

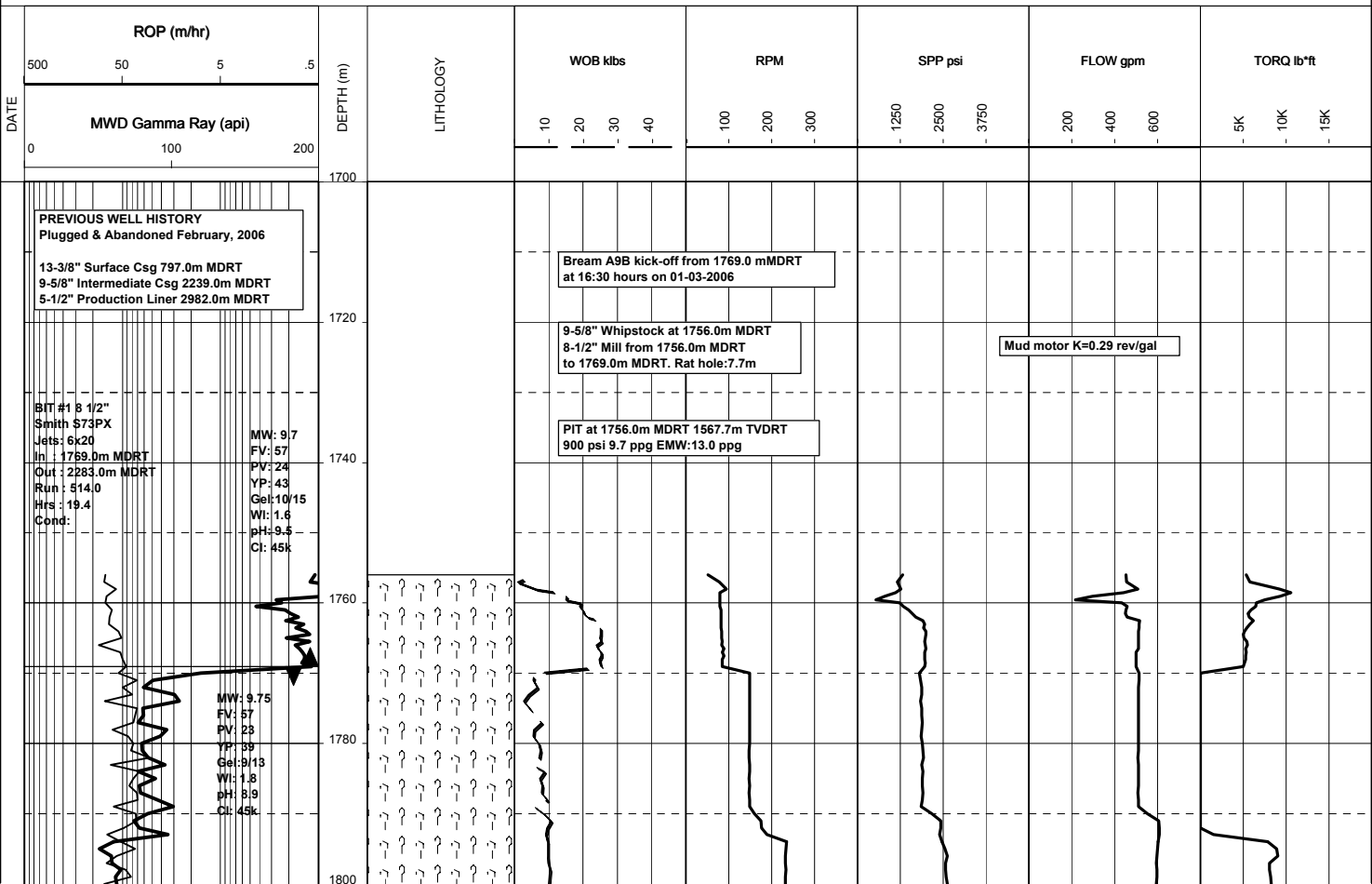
RT-MSL : 32.82m

Final TD : 2283.0m MDRT

RT-SEABED : 92.22m

Final TVD : 1994.35m TVDRT

Generated by ALS Package

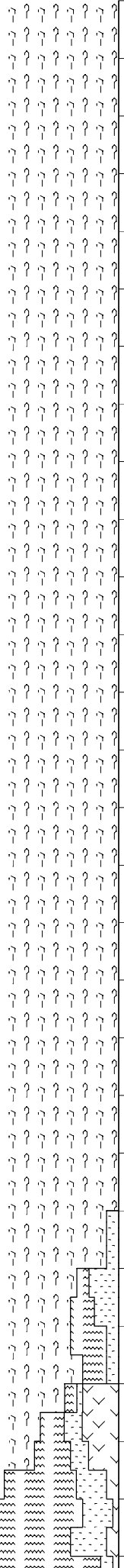


MW: 9.80  
FV: 59  
PV: 25  
YP: 41  
Gel: 9/13  
Wt: 2.5  
pH: 8.9  
Cl: 45k

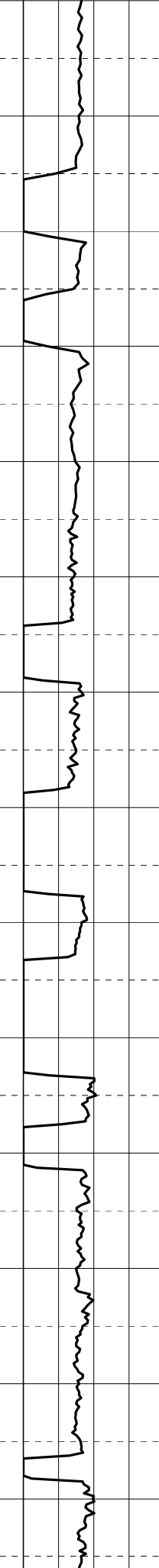
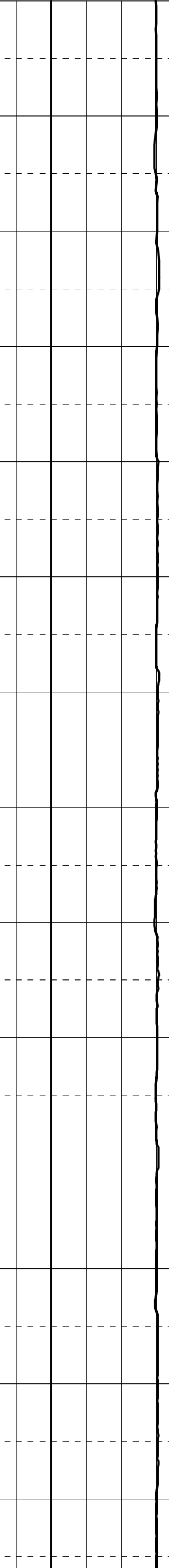
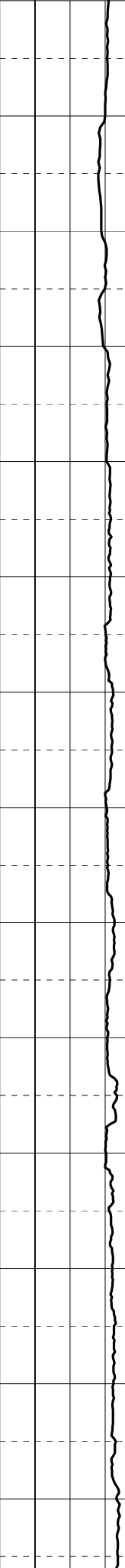
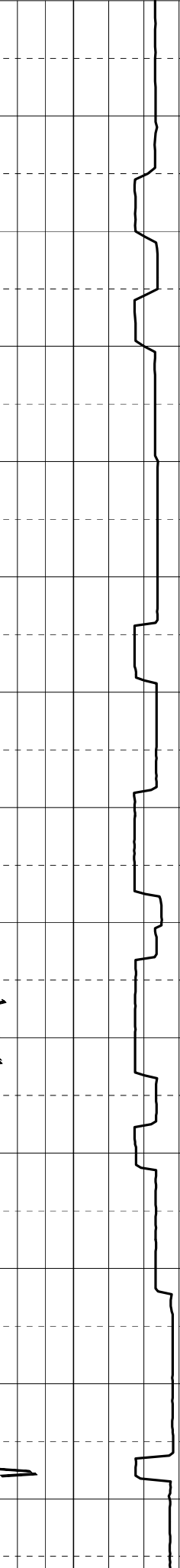
MW: 9.80  
FV: 60  
PV: 24  
YP: 44  
Gel: 10/16  
Wt: 3.5  
pH: 9.0  
Cl: 44k

MW: 10.0  
FV: 60  
PV: 27  
YP: 47  
Gel: 10/17  
Wt: 2.8  
pH: 9.4  
Cl: 45k

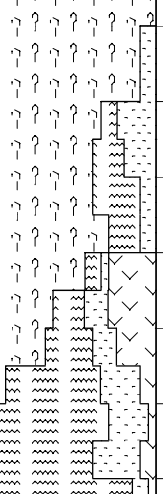
1820  
1840  
1860  
1880  
1900  
1920  
1940  
1960  
1980  
2000  
2020  
2040  
2060



Handwritten notes in the center of the page, oriented vertically. The text is partially obscured and difficult to read, but appears to contain descriptive information about the data or the sampling process.



02:03:06



2080  
2100  
2120  
2140  
2160  
2180  
2200  
2220  
2240  
2260  
2280  
2300

MW: 10.0  
FV: 75  
PV: 29  
YP: 44  
Gel: 10/17  
Wl: 3.2  
pH: 8.9  
Cl: 48K

03-03-06

MW: 10.0  
FV: 60  
PV: 27  
YP: 44  
Gel: 10/16  
Wl: 3.0  
pH: 8.8  
Cl: 48K

7" Production Casing shoe  
set at xxxx.0m MDRT  
Liner hanger at

Bream A9B reached Total Depth of  
2283.0m MDRT 1994.35m TVDRT  
at 14:15 hours on 03-03-2006

